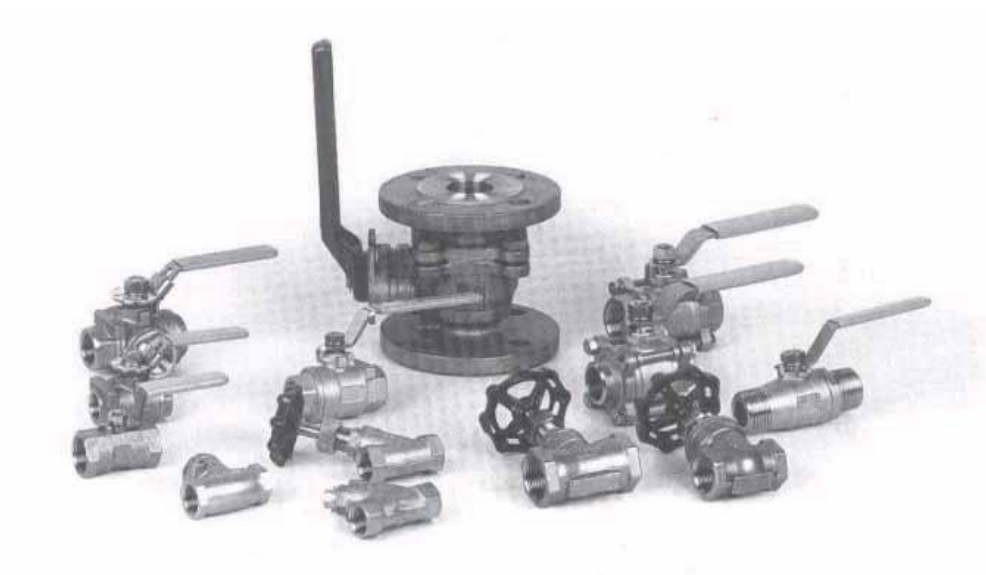


Terboinox d.o.o.

EXPORT-IMPORT

Ventili od nerđajućeg čelika



Armaturen aus rost- und säurebeständigem Edelstahl

Stainless steel valves / ball valves

ENODELNI KROGLIČNI VENTIL Z REDUCIRANIM PRETOKOM, PN 40

KUGELHAHN 1-TEILIG, MIT EINSCHRAUBEN, REDUZIERTER

DURSCHGANG, PN 40

BALL VALVE, 1-PC., SCREWED ENDS, REDUCED

BORE, PN 40



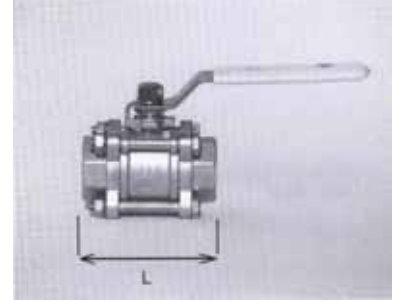
DN/NW	Navoj Gewinde Threading	L (ca.)	W.Nr.: 1.4408
8	1/4 "	39mm	●
10	3/8 "	44mm	●
15	1/2 "	57mm	●
20	3/4 "	58mm	●
25	1"	71mm	●
32	1 1/4 "	78mm	●
40	1 1/2 "	83mm	●
50	2"	100mm	●

3-DELNI KROGLIČNI VENTIL Z NOTRANJIM NAVOJEM, PN 63

KUGELHAHN 3-TEILIG, INNENGEWINDE, VOLLER

DURSGANG, PN 63

BALL VALVE, 3-PC., SCREWED ENDS, FULL BORE PN 63

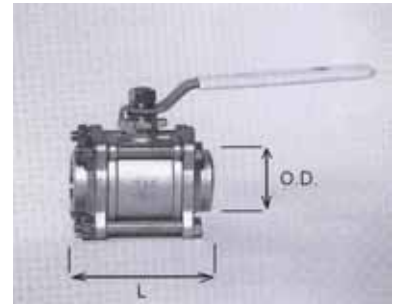


DN/NW	Navoj Gewinde Threading	L (ca.)	W.Nr.: 1.4408
8	1/4 "	60mm	●
10	3/8 "	60mm	●
15	1/2 "	75mm	●
20	3/4 "	80mm	●
25	1"	90mm	●
32	1 1/4 "	110mm	●
40	1 1/2 "	120mm	●
50	2"	141mm	●
65	2 1/2 "	165mm	●
80	3"	184mm	●
100	4"	232mm	●

3-DELNI KROGLIČNI VENTIL Z VARILNIM NASTAVKOM, PN 63

KUGELHAHN 3-TEILIG, MIT SCHWEIßENDEN, VOLLER DURSCHGANG, PN 63

BALL VALVE, 3-PC., BUTT WELD ENDS, FULL BORE PN 63



DN/NW	O.D.	L (ca.)	W.Nr.: 1.4408
8	13,5mm	60mm	●
10	17,2mm	60mm	●
15	21,3mm	75mm	●
20	26,9mm	80mm	●
25	33,7mm	90mm	●
32	42,4mm	110mm	●
40	48,3mm	120mm	●
50	60,3mm	141mm	●
65	76,1mm	165mm	●
80	88,9mm	184mm	●
100	114,3mm	232mm	●

2-DELNI KROGLIČNI VENTIL Z ZUNANJIM NAVOJEM, PN 63

KUGELHAHN 2-TEILIG, AUßENGEWINDE VOLLER DURSCHGANG, PN 63

BALL VALVE, 2-PC., MALE/MALE, FULL BORE, PN 63



DN/NW	Navoj Gewinde Threading	L (ca.)	W.Nr.: 1.4408
8	1/4 "	65mm	●
10	3/8 "	65mm	●
15	1/2 "	75mm	●
20	3/4 "	85mm	●
25	1"	100mm	●

2-DELNI KROGLIČNI VENTIL Z NOTRANJIM NAVOJEM, PN 63

KUGELHAHN 2-TEILIG, INNENGEWINDE VOLLER DURSCHGANG, PN 63

BALL VALVE, 2-PC., SCREWED ENDS, FULL BORE, PN 63

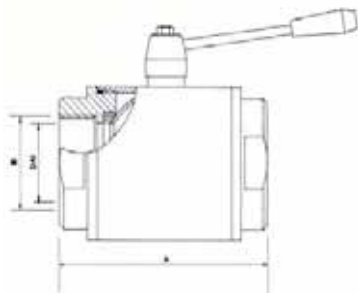


DN/NW	Navoj Gewinde Threading	L (ca.)	W.Nr.: 1.4408
8	1/4 "	54mm	●
10	3/8 "	54mm	●
15	1/2 "	64mm	●
20	3/4 "	75mm	●
25	1"	87mm	●
32	1 1/4 "	101mm	●
40	1 1/2 "	110mm	●
50	2"	132mm	●
65	2 1/2 "	167mm	●
80	3"	193mm	●

KROGLIČNI VENTIL N / N NAVOJ

KUGELHAHN I / I GEWINDE

BALL VALVE, FEMALE / FEMALE

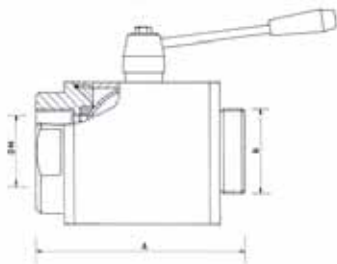


DN	A	B	C	W.Nr.:1.4301/1.4401 AISI 304 / AISI 316
25	73	1 "		●
32	95	1 ¼ "		●
40	98	1 ½ "		●
50	116	2 "		●
65	143	2 ½ "		●
80	160	3 "		●
90	175	3 ½ "		●
100	190	4 "		●

KROGLIČNI VENTIL N / Z NAVOJ

KUGELHAHN I / A GEWINDE

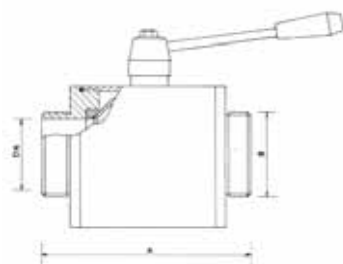
BALL VALVE, FEMALE / MALE



DN	A	B	C	W.Nr.:1.4301/1.4401 AISI 304 / AISI 316
25	81	1 "		●
32	100	1 ¼ "		●
40	113	1 ½ "		●
50	126	2 "		●
65	153	2 ½ "		●
80	160	3 "		●
90	175	3 ½ "		●
100	190	4 "		●

KROGLIČNI VENTIL Z / Z NAVOJ

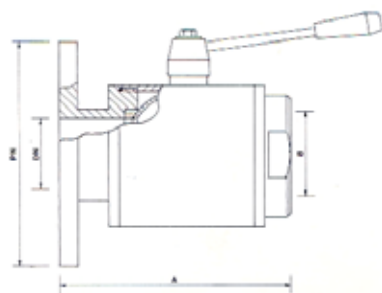
KUGELHAHN A / A GEWINDE
BALL VALVE, MALE / MALE



DN	A	B	C	W.Nr.:1.4301/1.4401 AISI 304 / AISI 316
25	89	1 "		●
32	106	1 ¼ "		●
40	128	1 ½ "		●
50	136	2 "		●
65	164	2 ½ "		●
80	160	3 "		●
90	175	3 ½ "		●
100	190	4 "		●

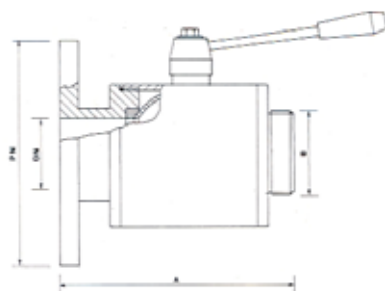
KROGLIČNI VENTIL PRIROBNICA / N NAVOJ

KUGELHAHN FLANSCH / I GEWINDE
BALL VALVE, FLANGE / FEMALE



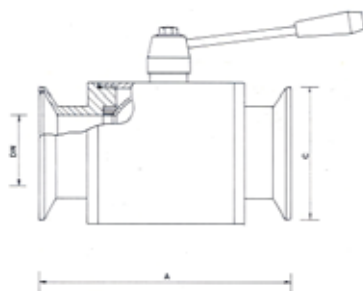
DN	A	B	C	W.Nr.:1.4301/1.4401 AISI 304 / AISI 316
25	89	1 "		●
32	103	1 ¼ "		●
40	115	1 ½ "		●
50	128	2 "		●
65	155	2 ½ "		●
80	163	3 "		●
90	185	3 ½ "		●
100	200	4 "		●

KROGLIČNI VENTIL PRIROBNICA / Z NAVOJ
KUGELHAHN FLANSCH / A GEWINDE
BALL VALVE, FLANGE / MALE



DN	A	B	C	W.Nr.:1.4301/1.4401 AISI 304 / AISI 316
25	98	1 "		●
32	108	1 ¼ "		●
40	130	1 ½ "		●
50	138	2 "		●
65	165	2 ½ "		●
80	162	3 "		●
90	185	3 ½ "		●
100	202	4 "		●

KROGLIČNI VENTIL GAROLLA / GAROLLA
KUGELHAHN GAROLLA / GAROLLA
BALL VALVE, GAROLLA / GAROLLA

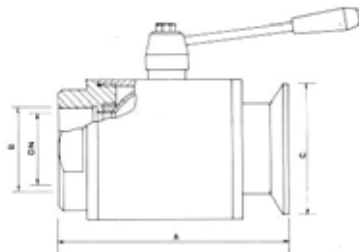


DN	A	B	C	W.Nr.:1.4301/1.4401 AISI 304 / AISI 316
32	102		40	●
40	110		50	●
50	123		60	●
65	159		70	●
80	158		80	●
90	175		100	●
100	190		100	●
120	215		120	●

KROGLIČNI VENTIL N NAVOJ / GAROLLA

KUGELHAHN I GEWINDE / GAROLLA

BALL VALVE, FEMALE / GAROLLA

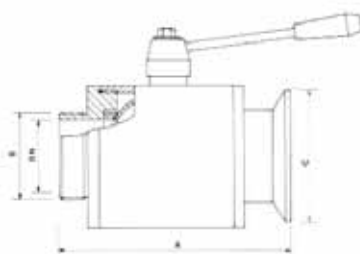


DN	A	B	C	W.Nr.:1.4301/1.4401 AISI 304 / AISI 316
32	99	1 ¼ "	40	●
40	104	1 ½ "	50	●
50	120	2 "	60	●
65	151	2 ½ "	70	●
80	160	3 "	80	●
90	175	3 ½ "	100	●
100	190	4 "	100	●

KROGLIČNI VENTIL Z NAVOJ / GAROLLA

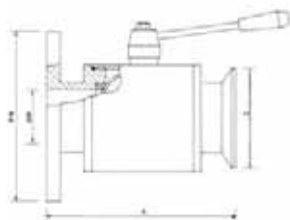
KUGELHAHN A GEWINDE / GAROLLA

BALL VALVE, MALE / GAROLLA



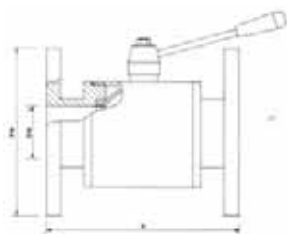
DN	A	B	C	W.Nr.:1.4301/1.4401 AISI 304 / AISI 316
32	104	1 ¼ "	40	●
40	111	1 ½ "	50	●
50	129	2 "	60	●
65	161	2 ½ "	70	●
80	159	3 "	80	●
90	175	3 ½ "	100	●
100	190	4 "	100	●

KROGLIČNI VENTIL PRIROBNICA / GAROLLA
KUGELHAHN FLANSCH / GAROLLA
BALL VALVE, FLANGE / GAROLLA



DN	A	B	C	W.Nr.:1.4301/1.4401 AISI 304 / AISI 316
32	106		40	●
40	121		50	●
50	131		60	●
65	162		70	●
80	160		80	●
90	178		100	●
100	200		100	●
120	220		120	●

KROGLIČNI VENTIL PRIROBNICA / PRIROBNICA
KUGELHAHN FLANSCH / FLANSCH
BALL VALVE, FLANGE / FLANGE

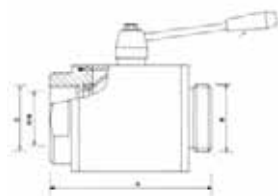


DN	A	B	C	W.Nr.:1.4301/1.4401 AISI 304 / AISI 316
25	106			●
32	110			●
40	132			●
50	140			●
65	163			●
80	166			●
90	183			●
100	210			●
120	235			●

KROGLIČNI VENTIL N NAVOJ / MACON

KUGELHAHN I GEWINDE / MACON

BALL VALVE, FEMALE / MACON

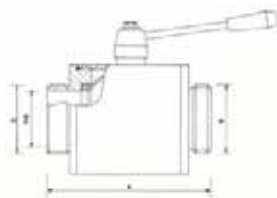


DN	A	B	C	W.Nr.:1.4301/1.4401 AISI 304 / AISI 316
40	113	40	1 ½"	●
50	126	50	2 "	●
65	154	70	2 ½ "	●
80	159	80	3"	●
100	191	100	4 "	●

KROGLIČNI VENTIL Z NAVOJ / MACON

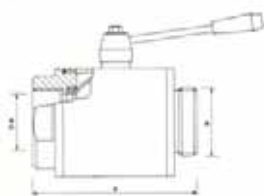
KUGELHAHN A GEWINDE / MACON

BALL VALVE, MALE / MACON



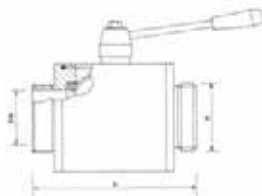
DN	A	B	C	W.Nr.:1.4301/1.4401 AISI 304 / AISI 316
40	126	40	1 ½"	●
50	136	50	2 "	●
65	164	70	2 ½ "	●
80	160	80	3"	●
100	192	100	4 "	●

KROGLIČNI VENTIL N NAVOJ / Z NAVOJ DIN
KUGELHAHN I GEWINDE / A GEWINDE DIN
BALL VALVE, FEMALE / MALE DIN



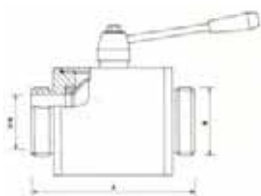
DN	A	B	C	W.Nr.:1.4301/1.4401 AISI 304 / AISI 316
25	84	25	1 "	●
32	107	32	1 ¼ "	●
40	113	40	1 ½ "	●
50	126	50	2 "	●
65	154	65	2 ½ "	●
80	159	80	3 "	●
100	191	100	4 "	●

KROGLIČNI VENTIL Z NAVOJ / Z NAVOJ DIN
KUGELHAHN A GEWINDE / A GEWINDE DIN
BALL VALVE, MALE / MALE DIN



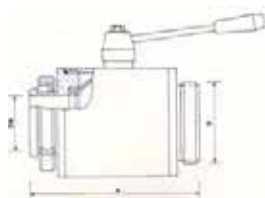
DN	A	B	C	W.Nr.:1.4301/1.4401 AISI 304 / AISI 316
25	92	25	1 "	●
32	113	32	1 ¼ "	●
40	121	40	1 ½ "	●
50	136	50	2 "	●
65	164	65	2 ½ "	●
80	160	80	3 "	●
100	191	100	4 "	●

KROGLIČNI VENTIL Z NAVOJ DIN / Z NAVOJ DIN
KUGELHAHN A GEWINDE DIN / A GEWINDE DIN
BALL VALVE, MALE DIN / MALE DIN



DN	A	B	C	W.Nr.:1.4301/1.4401 AISI 304 / AISI 316
25	95	25		●
32	108	32		●
40	128	40		●
50	136	50		●
65	164	65		●
80	160	80		●
100	192	100		●

KROGLIČNI VENTIL MATICA DIN / Z NAVOJ DIN
KUGELHAHN MUTTER DIN / A GEWINDE DIN
BALL VALVE, RING DIN / MALE DIN



DN	A	B	C	W.Nr.:1.4301/1.4401 AISI 304 / AISI 316
25	105	25		●
32	116	32		●
40	130	40		●
50	140	50		●
65	164	65		●
80	166	80		●
100	204	100		●

TROPOTNI KROGLIČNI VENTILI

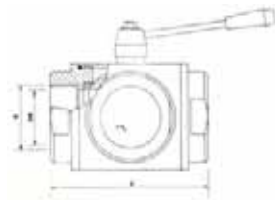
3-WEGE KUGELHAHNE

3-WAY BALL VALVES

KROGLIČNI VENTIL N NAVOJ

KUGELHAHN I GEWINDE

BALL VALVE, FEMALE

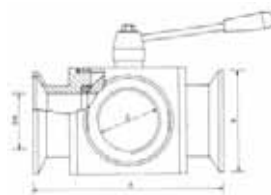


DN	A	B	C	W.Nr.:1.4301/1.4401 AISI 304 / AISI 316
25	127	1 "		●
32	134	1 ¼ "		●
40	148	1 ½ "		●
50	170	2 "		●
65	200	2 ½ "		●
80	218	3 "		●
100	260	4 "		●

KROGLIČNI VENTIL N NAVOJ / GAROLLA

KUGELHAHN I GEWINDE / GAROLLA

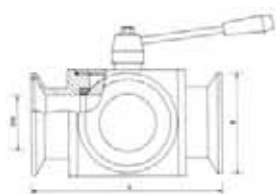
BALL VALVE, FEMALE / GAROLLA



DN	A	B	C	W.Nr.:1.4301/1.4401 AISI 304 / AISI 316
32	120	40	1 ¼ "	●
40	134	50	1 ½ "	●
50	156	60	2 "	●
65	184	70	2 ½ "	●
80	196	80	3 "	●
100	260	100	4 "	●

KROGLIČNI VENTIL GAROLLA

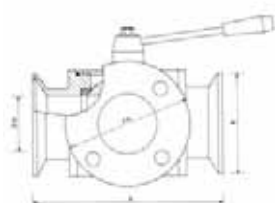
KUGELHAHN GAROLLA
BALL VALVE, GAROLLA



DN	A	B	C	W.Nr.:1.4301/1.4401 AISI 304 / AISI 316
25	113	25		●
32	120	32		●
40	134	40		●
50	156	50		●
65	184	65		●
80	196	80		●
100	260	100		●

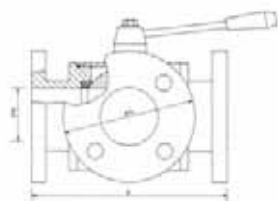
KROGLIČNI VENTIL PRIROBNICA / GAROLLA

KUGELHAHN I FLANSCH / GAROLLA
BALL VALVE, FLANGE / GAROLLA



DN	A	B	C	W.Nr.:1.4301/1.4401 AISI 304 / AISI 316
25	113	25		●
32	120	32		●
40	134	40		●
50	156	50		●
65	184	65		●
80	196	80		●
100	260	100		●

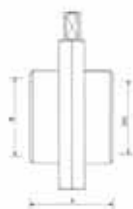
KROGLIČNI VENTIL PRIROBNICA / PRIROBNICA
KUGELHAHN FLANSCH / FLANSCH
BALL VALVE, FLANGE / FLANGE



DN	A	B	C	W.Nr.:1.4301/1.4401 AISI 304 / AISI 316
25	135			•
32	145			•
40	158			•
50	175			•
65	200			•
80	230			•
100	280			•

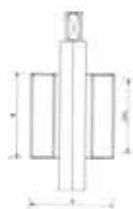
LOPUTNI VENTILI
SCHEIBENVENTILE
BUTTERFLY VALVES

LOPUTNI VENTIL N NAVOJ / N NAVOJ
SCHEIBENVENTIL I GEWINDE / I GEWINDE
BUTTERFLY VALVE, FEMALE / FEMALE



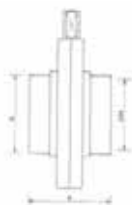
DN	A	B	C	W.Nr.:1.4301/1.4401 AISI 304 / AISI 316
25	66	1 "		●
32	66	1 ¼ "		●
40	66	1 ½ "		●
50	70	2 "		●
65	78	2 ½ "		●
80	88	3 "		●
100	90	4 "		●

LOPUTNI VENTIL Z NAVOJ / Z NAVOJ
SCHEIBENVENTIL A GEWINDE / A GEWINDE
BUTTERFLY VALVE, MALE / MALE



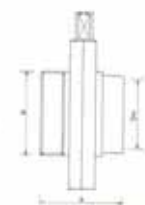
DN	A	B	C	W.Nr.:1.4301/1.4401 AISI 304 / AISI 316
25	66	1 "		●
32	66	1 ¼ "		●
40	66	1 ½ "		●
50	70	2 "		●
65	78	2 ½ "		●
80	88	3 "		●
100	90	4 "		●

LOPUTNI VENTIL VARILNI
SCHEIBENVENTIL SCHWEISSENDE
BUTTERFLY VALVE WELDING



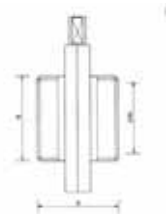
DN	A	B	C	W.Nr.:1.4301/1.4401 AISI 304 / AISI 316
25	66	28		●
32	66	34		●
40	66	40		●
50	70	52		●
65	78	70		●
80	88	85		●
100	90	104		●

LOPUTNI VENTIL VARILNI / Z NAVOJ
SCHEIBENVENTIL SCHWEISSENDE / A GEWINDE
BUTTERFLY VALVE WELDING / FEMALE



DN	A	B	C	W.Nr.:1.4301/1.4401 AISI 304 / AISI 316
25	66	1 "		●
32	66	1 ¼ "		●
40	66	1 ½ "		●
50	70	2 "		●
65	78	2 ½ "		●
80	88	3 "		●
100	90	4 "		●

LOPUTNI VENTIL Z NAVOJ DIN / Z NAVOJ DIN
SCHEIBENVENTIL A GEWINDE DIN / A GEWINDE DIN
BUTTERFLY VALVE MALE DIN / MALE DIN



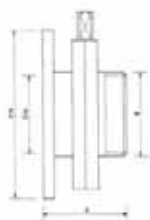
DN	A	B	C	W.Nr.:1.4301/1.4401 AISI 304 / AISI 316
25	66	25		●
32	66	32		●
40	66	40		●
50	70	50		●
65	78	65		●
80	88	80		●
100	90	100		●

LOPUTNI VENTIL MATICA DIN / Z NAVOJ
SCHEIBENVENTIL MUTTER DIN / A GEWINDE
BUTTERFLY VALVE RING DIN / FEMALE



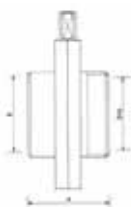
DN	A	B	C	W.Nr.:1.4301/1.4401 AISI 304 / AISI 316
25	72	25		●
32	72	32		●
40	76	40		●
50	85	50		●
65	89	65		●
80	99	80		●
100	105	100		●

LOPUTNI VENTIL PRIROBNICA / Z NAVOJ DIN
SCHEIBENVENTIL FLANSCH / A GEWINDE DIN
BUTTERFLY VALVE FLANGE / MALE DIN



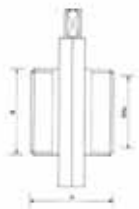
DN	A	B	C	W.Nr.:1.4301/1.4401 AISI 304 / AISI 316
25	78	25		●
32	80	32		●
40	80	40		●
50	85	50		●
65	93	65		●
80	103	80		●
100	107	100		●

LOPUTNI VENTIL N NAVOJ / MACON
SCHEIBENVENTIL I GEWINDE / MACON
BUTTERFLY VALVE RING FEMALE / MACON



DN	A	B	C	W.Nr.:1.4301/1.4401 AISI 304 / AISI 316
40	70	40		●
50	75	50		●
65	80	65		●
80	93	80		●
100	96	100		●

LOPUTNI VENTIL MACON / MACON
SCHEIBENVENTIL MACON / MACON
BUTTERFLY VALVE MACON / MACON



DN	A	B	C	W.Nr.:1.4301/1.4401 AISI 304 / AISI 316
40	70	40		●
50	75	50		●
65	80	70		●
80	93	80		●
100	96	100		●

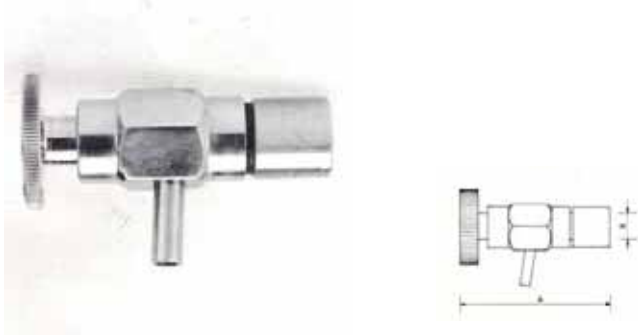
TESNILO ZA LOPUTNI VENTIL
DICHTUNG FÜR SCHEIBENVENTIL
GASKET FOR BUTTERFLY VALVES



DN	A	B	C	W.Nr.:1.4301/1.4401 AISI 304 / AISI 316
25/28	27	43,6	23,2	●
34/38	35	52,3	23,2	●
40	39	55,6	23,2	●
51/52	49	66	23,2	●
60/63	59,5	76,4	23,4	●
70/76	69,5	88,8	25,4	●
85	79,5	99	25,4	●
101	100	119	25,4	●

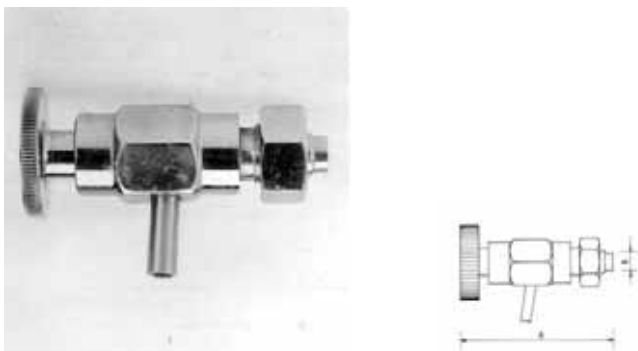
PIPICE ZA PREIZKUS IN NIVOKAZI
PROBIERVENTILE UND STANDANZEIGVENTILE
SLEEVE JOINT SAMPLERS AND LEVEL HOLDERS

PIPICA ZA PREIZKUS Z NOTRANJIM NAVOJEM
PROBIERVENTIL MIT MUFFE
SLEEVE JOINT SAMPLER



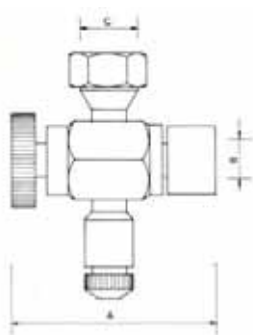
DN	A	B	C	W.Nr.:1.4301/1.4401 AISI 304 / AISI 316
	80	3/8"		•

PIPICA ZA PREIZKUS
PROBIERVENTIL
NIPPLE SAMPLER



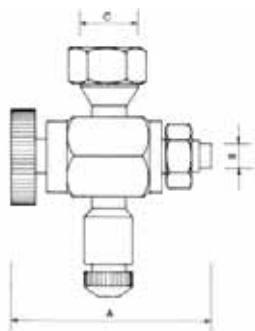
DN	A	B	C	W.Nr.:1.4301/1.4401 AISI 304 / AISI 316
	85	Ø 10		•

NIVOKAZ Z IZPUSTNO PIPICO IN NOTRANJIM NAVOJEM
STANDANZEIGVENTIL MIT AUSLASSVENTIL UND MUFFE
INFERIOR SLEEVE JOINT LEVEL HOLDER



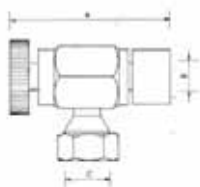
DN	A	B	C	W.Nr.:1.4301/1.4401 AISI 304 / AISI 316
		Ø14		•
	90	½"	Ø16	•
		Ø20		•

NIVOKAZ Z IZPUSTNO PIPICO
STANDANZEIGVENTIL MIT AUSLASSVENTIL
INFERIOR NIPPLE LEVEL HOLDER



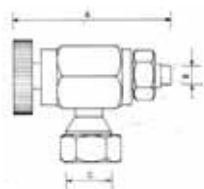
DN	A	B	C	W.Nr.:1.4301/1.4401 AISI 304 / AISI 316
			Ø14	•
	90	Ø 14	Ø16	•
			Ø20	•

NIVOKAZ Z Z NOTRANJIM NAVOJEM
STANDANZEIGVENTIL MIT MUFFE
UPPER SLEEVE JOINT LEVEL HOLDER



DN	A	B	C	W.Nr.:1.4301/1.4401 AISI 304 / AISI 316
		Ø14		•
	90	½"	Ø16	•
		Ø20		•

NIVOKAZ
STANDANZEIGVENTIL
UPPER NIPPLE LEVEL HOLDER



DN	A	B	C	W.Nr.:1.4301/1.4401 AISI 304 / AISI 316
			Ø14	•
	90	Ø 14	Ø16	•
			Ø20	•